

2024 Corn Belt Ports & Upper Mississippi River Regional Multi-Modal Port & Logistics Center Annual Meeting



October 10, 2024



Illinois Department of Transportation (IDOT) Update

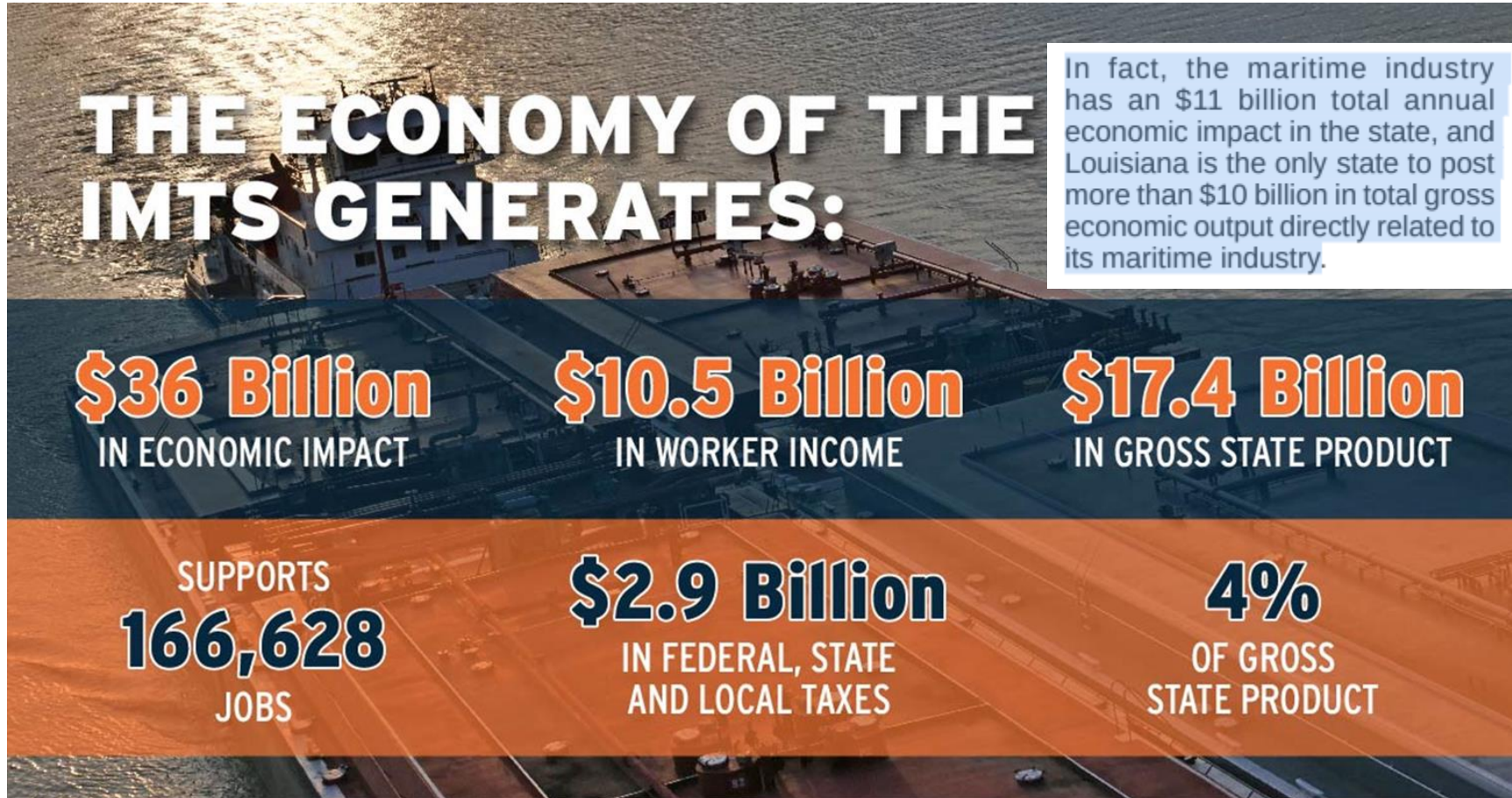
Presented on October 10, 2024

Illinois Department of Transportation (IDOT) Update





[Illinois Marine Transportation System Plan and Economic Impact Analysis Study.pdf](#)

Illinois Department of Transportation (IDOT) Update



[Illinois Marine Transportation System Plan and Economic Impact Analysis Study.pdf](#)


Illinois Department of Transportation (IDOT) Update



The IMTS Moves:

90.6 MILLION TONS OF FREIGHT

7% OF ALL STATEWIDE FREIGHT TRAFFIC



Freight Tonnage
DECLINED 16% IN 3 YEARS DUE TO LOSS OF OUTBOUND COAL TRAFFIC

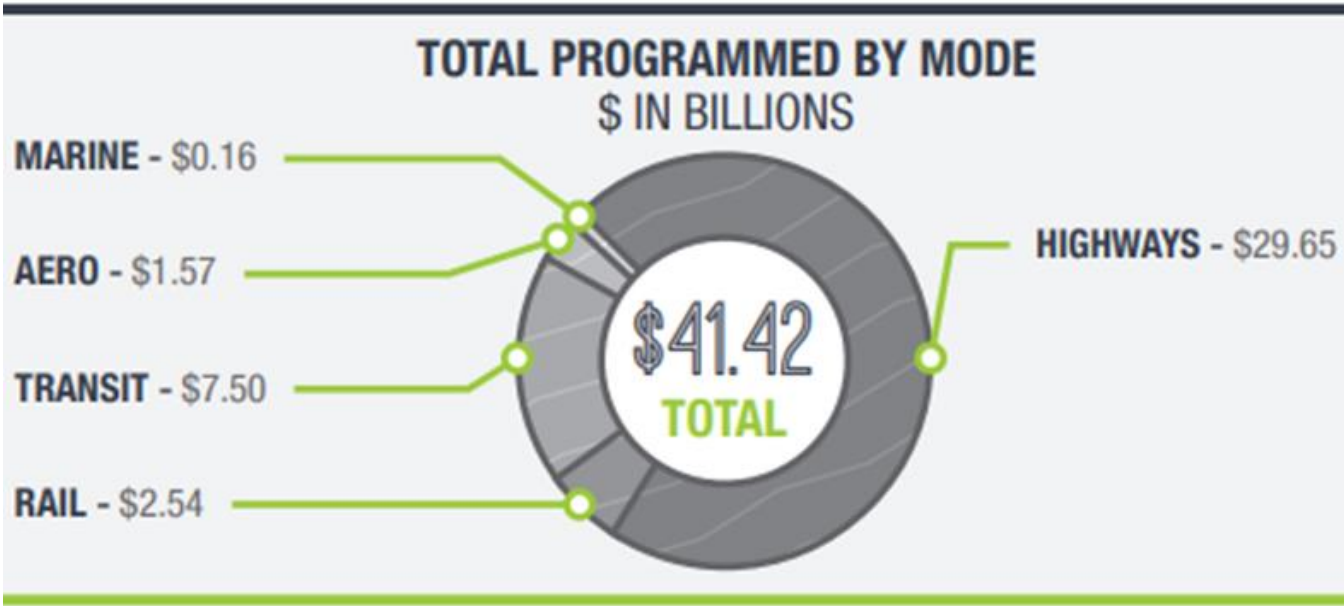
Illinois Waterborne Tonnage FORECASTED TO GROW 5% BY 2045



Ongoing Projects and Initiatives

Presented on October 10, 2024

Illinois Department of Transportation (IDOT) Update



FY 2025-2030
PROPOSED
HIGHWAY & MULTIMODAL
IMPROVEMENT PROGRAM
June 2024

Illinois Department of Transportation

MultiModal Program

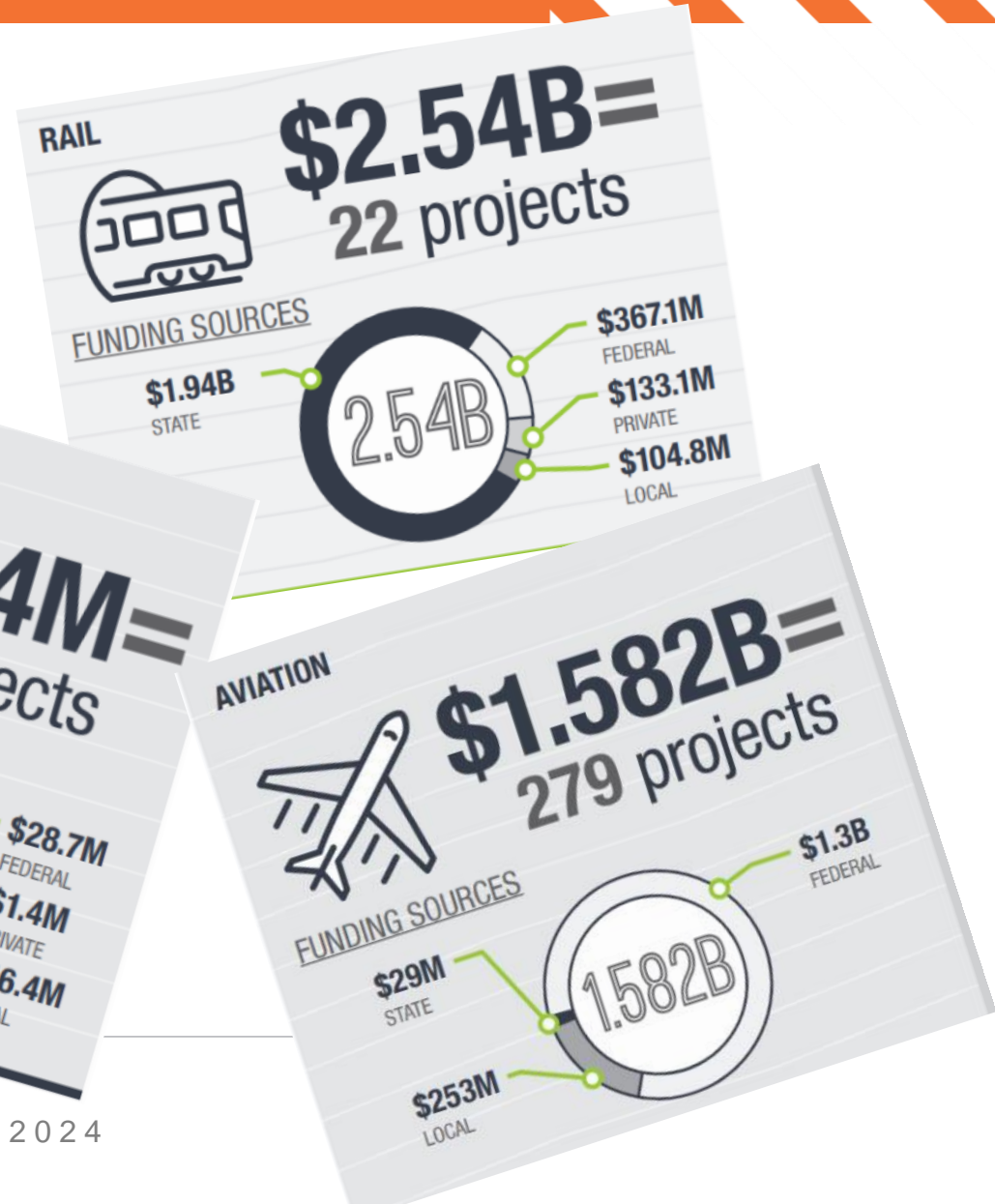
FY 2025–2030 MULTIMODAL FUNDING

\$11.79B
over six years



- MORE THAN **50** TRANSIT PROVIDERS
- NEARLY **80** AIRPORTS
- ALL **7** CLASS I RAILROADS
- 19** PUBLIC PORTS

- Port/Waterways
- Rail
- Aeronautics



2021 Illinois Port Facilities Capital Grant Program



The Illinois Port Facilities Capital Investment Grant Program provided **\$150 million** to public agencies for the planning and development of facilities within public port districts that are included within the Illinois Marine Transportation System.

IMTS is comprised of landside infrastructure that allows transportation to, from and on the following navigable waterways:

- Mississippi River** (Upper Mississippi and Middle Mississippi)
- Illinois River**
- Chicago Area Waterway System**
- Kaskaskia River**
- Ohio River**
- Lake Michigan**

2021 Illinois Port Facilities Capital Grant Program



Goals used for scoring criteria

Safety - Improve public health and safety by reducing transportation-related fatalities and injuries as well as property damage only events.

Modal Connectivity - Enhance integration and connectivity across and between transportation modes for Illinois and the nation resulting in increased multi-modal options for freight movement.

State of Good Repair - Ensure Illinois proactively maintains critical transportation infrastructure in a state of good repair.

Economic Competitiveness - Promote transportation policies and investments that bring lasting economic benefits to Illinois, its citizens, and its businesses.

Mode Shift - Shifting cargo to barge rather than to truck or rail may reduce local roadway and grade crossing damage and congestion throughout many communities.

Economic Opportunity - Investments should increase opportunity for economically distressed areas.

Environmental Sustainability - Advance environmentally sustainable policies and investments that reduce carbon and other harmful emissions from transportation sources.

Illinois Department of Transportation (IDOT)

Update



FY-2021 Rebuild Illinois Capital Plan								
Port Facilities Capital Investment Grant Program								
Selected Projects and Funding Amount								
	Port District	County	City	Project Description	Estimated Cost (Programmed)	State Funding	Local Funding	IDOT District
1	Illinois International Port District (IIPD - Chicago)	Cook	Chicago	Iroquois Landing Dock Wall Rehabilitation	\$15,600,000	\$13,000,000	\$2,600,000	1
2	Illinois International Port District (IIPD - Chicago)	Cook	Chicago	Transit Sheds Roof Replacement	\$9,000,000	\$8,550,000	\$450,000	1
3	Waukegan Port District	Lake County	Waukegan	Reconstruct Dockwall	\$12,000,000	\$12,000,000	\$0	1
4	Upper Mississippi River International Port District (UMRIPD)	Carroll	Savanna	Land acquisition, Remediation and Utilities	\$7,000,000	\$7,000,000	\$0	2
5	Ottawa Port District	LaSalle	Ottawa	Ottawa Port District Intermodal Rail Yard	\$10,285,000	\$9,770,750	\$514,250	3
6	Mid-America Intermodal Authority Port District (MAP-Quincy)	Adams	Quincy	Alter Logistics Terminal Facility and Municipal Dock Rehabilitation	\$13,763,192	\$13,163,192	\$600,000	6
7	America's Central Port District (ACP-Granite City)	Madison	Granite City	Madison Harbor Sediment Reduction	\$13,000,000	\$13,000,000	\$0	8
8	America's Central Port District (ACP-Granite City)	Madison	Granite City	Granite City Harbor Truck Staging / Calling Center	\$5,500,000	\$5,500,000	\$0	8
9	America's Central Port District (ACP-Granite City)	Madison	Granite City	Hill Storage Track and other Granite City Harbor Track Improvements	\$2,500,000	\$2,375,000	\$125,000	8
10	Kaskaskia Regional Port District (KRPD-Red Bud)	St. Clair	New Athens	KRPD #1 Rail Loop and Outbound Conveyors	\$14,000,000	\$10,000,000	\$4,000,000	8
11	Kaskaskia Regional Port District (KRPD-Red Bud)	Randolph	Baldwin	KRPD #2 Gateway FS - Fertilizer Facility Expansion	\$4,700,000	\$2,700,000	\$2,000,000	8
12	Shawneetown Regional Port District	Gallatin	Shawneetown	Public Private Partnership River Terminal (Fertilizer Blend Facility)	\$13,200,000	\$11,200,000	\$2,000,000	9
13	Alexander-Cairo Port District (Legislative Earmark)	Alexander	Cairo	Public/Private Cairo International Port Terminal Facility	\$40,000,000	\$40,000,000	\$0	9
Totals					\$160,548,192	\$148,258,942	\$12,289,250	



Statewide Planning & Research (SPR) Funded Port Planning Projects

Presented on October 10, 2024

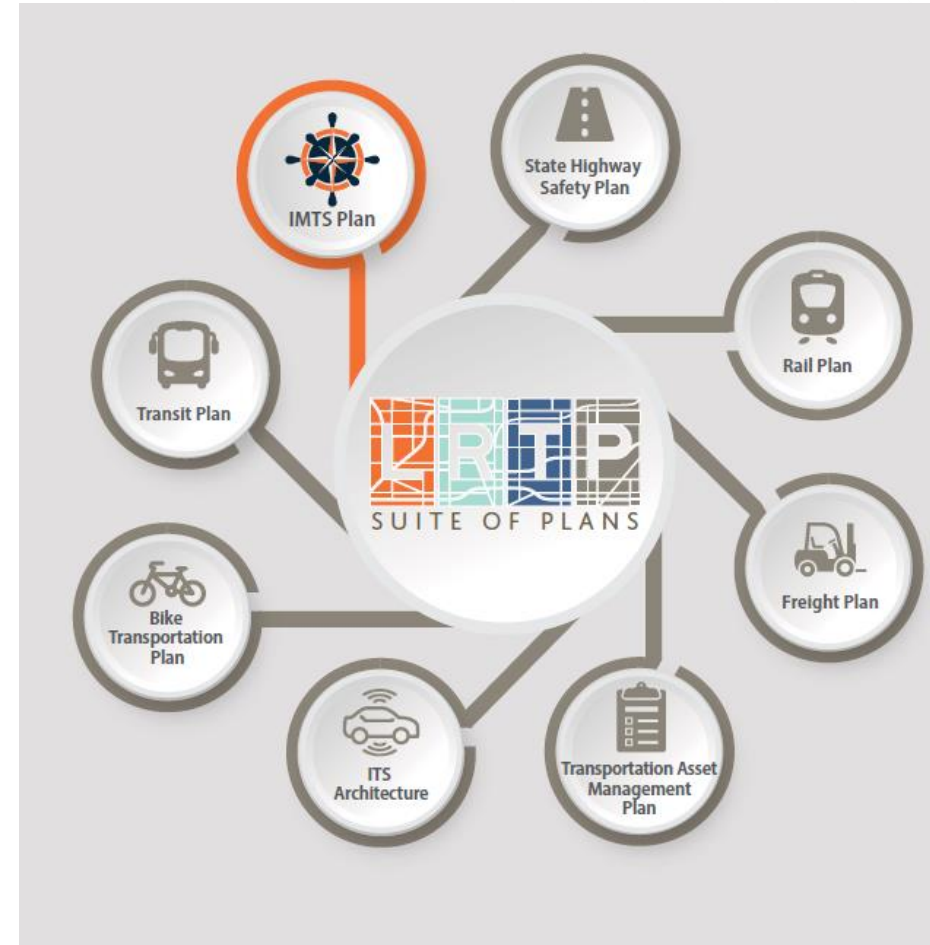
Illinois Department of Transportation (IDOT) Update

Statewide Planning & Research Funds

Statewide Planning & Research (SPR) funds are a set aside from federal transportation funds that are used to support planning and research activities. The funds are used to establish a cooperative, continuous, and comprehensive framework for making transportation investment decisions and to carryout transportation planning and research activities throughout the State.

Projects should be related to further studying or implementing a goal, strategy, or objective within the State's Long Range Transportation Plan or one of the Department's modal plans. IDOT evaluates and select projects based on their ability to further study or implement the Long Range Transportation Plan (LRTP) or one of the Department's modal plans.

- ❑ IDOT requests \$20 million annually
- ❑ 20% match, state funds available to projects
- ❑ No minimum award requirement or maximum award cap

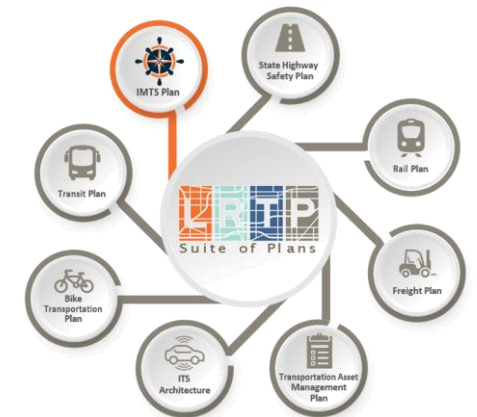
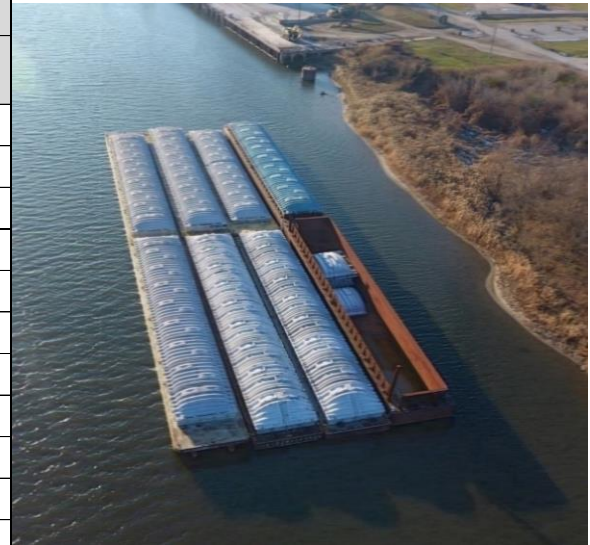


Statewide Planning & Research (SPR) Funded Port Planning Projects

IDOT Port Statewide Planning & Research (SPR) Funded Projects (2018-2025)

Fiscal Year	Status	Sponsor	County	City	Project Description	State Funding	IDOT District
2018	Complete	Illinois International Port District (IIPD - Chicago)	Cook	Chicago	Port Master Plan Study	\$351,947	1
2018	Complete	East Central Intergovernmental Association (ECIA)	Jo Daviess	East Dubuque	ECIA Port Expansion Study for terminals in Dubuque, IA and East Dubuque, IL	\$150,000	2
2020	Complete	America's Central Port District (ACP-Granite City)	Madison	Granite City	Port Infrastructure Conditions Assessment Project	\$486,000	8
2020	Complete	Kaskaskia Regional Port District (KRPD-Red Bud)	Randolph	Red Bud	Port Master Plan Study	\$120,000	8
2021	Complete	Bi-State Regional Planning Commission	Rock Island	Rock Island	MRPEIWI Mapping Tool Project	\$48,000	2
2021	Complete	Havana Regional Port District	Mason	Havana	Port Master Plan Study	\$250,000	8
2022	In Progress	Upper Mississippi River International Port District (UMRIPD)	Carroll	Savanna	Port Master Plan Study	\$400,000	2
2022	In Progress	Joliet Regional Port District	Will	Romeoville	Strategic Marine and Port Master Plan Study	\$400,000	1
2022	In Progress	Port of Henry	Marshall	Henry	Port Master Development and Implementation plan	\$300,000	4
2023	In Progress	Heart of Illinois Regional Port District	Peoria	Peoria	Master Plan Development and Implementation Strategy	\$465,500	4
2023	In Progress	America's Central Port District (ACP-Granite City)	St. Clair	Granite City	FLOAT - Ferry Landing Operations Attract Tourists Study	\$210,000	8
2024	In Progress	Massac Metropolis Port District	Massac	Metropolis	Port Master Plan Study	\$300,000	9
2024	In Progress	Illinois International Port District (IIPD - Chicago)	Cook	Chicago	Infrastructure Sustainability and Climate Resiliency Plan	\$435,000	1
2024	In Progress	Kaskaskia Regional Port District (KRPD-Red Bud)	Ranolph	Red Bud	Fuel Pipeline Feasibility Study	\$50,000	8
2024	In Progress	America's Central Port District (ACP-Granite City)	St. Clair	Granite City	Illinois aRT3	\$300,000	8
2025	Agreement/Pre-bid Phase	America's Central Port District (ACP-Granite City)	St. Clair	Granite City	Climate Action Plan	\$350,000	8
2025	Agreement/Pre-bid Phase	City of Rock Island	Rock Island	Rock Island	Master Plan and Implementation Strategy	\$460,000	2
2025	Agreement/Pre-bid Phase	Greater Egypt Regional Planning and Development Commission	Jackson, Union		Jackson-Union County Regional Port District Feasibility Study	\$249,936	9
						Total	\$5,326,383

■ Complete
 ■ In Progress
 ■ Agreement/Pre-bid Phase

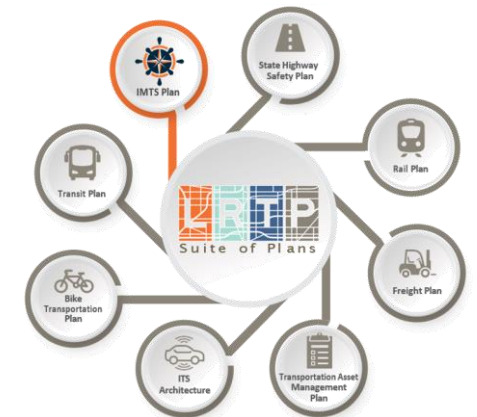
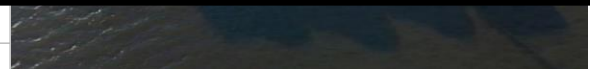


IDOT has funded 18 port planning projects since 2018

Statewide Planning & Research (SPR) Funded Port Planning Projects

IDOT Port Statewide Planning & Research (SPR) Funded Projects (2018-2025)

Fiscal Year	Status	Sponsor	County	City	Project Description	State Funding	IDOT District
2018	Complete	Illinois International Port District (IIPD - Chicago)	Cook	Chicago	Port Master Plan Study	\$351,947	1
2018	Complete	East Central Intergovernmental Association (ECIA)	Jo Daviess	East Dubuque	ECIA Port Expansion Study for terminals in Dubuque, IA and East Dubuque, IL	\$150,000	2
2020	Complete	America's Central Port District (ACP-Granite City)	Madison	Granite City	Port Infrastructure Conditions Assessment Project	\$486,000	8
2020	Complete	Kaskaskia Regional Port District (KRPD-Red Bud)	Randolph	Red Bud	Port Master Plan Study	\$120,000	8
2021	Complete	Bi-State Regional Planning Commission	Rock Island	Rock Island	MRPEIWI Manning Tool Project	\$48,000	2
2021	In Progress	America's Central Port District (ACP-Granite City)	St. Clair	Granite City	Climate Action Plan	\$350,000	
2022	In Progress	City of Rock Island	Rock Island	Rock Island	Master Plan and Implementation Strategy	\$460,000	
2022	In Progress	Greater Egypt Regional Planning and Development Commission	Jackson, Union		Jackson-Union County Regional Port District Feasibility Study	\$249,936	
2023	In Progress	Heart of Illinois Regional Port District	Peoria	Peoria	Master Plan Development and Implementation Strategy	\$465,500	4
2023	In Progress	America's Central Port District (ACP-Granite City)	St. Clair	Granite City	FLOAT - Ferry Landing Operations Attract Tourists Study	\$210,000	8
2024	In Progress	Massac Metropolis Port District	Massac	Metropolis	Port Master Plan Study	\$300,000	9
2024	In Progress	Illinois International Port District (IIPD - Chicago)	Cook	Chicago	Infrastructure Sustainability and Climate Resiliency Plan	\$435,000	1
2024	In Progress	Kaskaskia Regional Port District (KRPD-Red Bud)	Randolph	Red Bud	Fuel Pipeline Feasibility Study	\$50,000	8
2024	In Progress	America's Central Port District (ACP-Granite City)	St. Clair	Granite City	Illinois aRT3	\$300,000	8
2025	In Progress	America's Central Port District (ACP-Granite City)	St. Clair	Granite City	Climate Action Plan	\$350,000	8
2025	In Progress	City of Rock Island	Rock Island	Rock Island	Master Plan and Implementation Strategy	\$460,000	2
2025	In Progress	Greater Egypt Regional Planning and Development Commission	Jackson, Union		Jackson-Union County Regional Port District Feasibility Study	\$249,936	9
						Total	\$5,326,383



IDOT has funded 18 port planning projects since 2018

Statewide Planning & Research (SPR) Funded Port Planning Projects

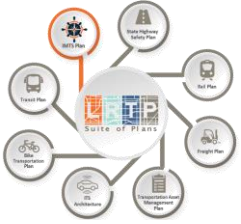


Bi-State Regional Commission - Mississippi River Ports of Eastern Iowa and Western Illinois Mapping Tool

The **Upper Mississippi River Ports (UMRP)** consist of existing Iowa and Illinois ports and terminals along the Mississippi River from river mile 361.5 in Keokuk, Iowa to river mile 583 in Dubuque, Iowa. The federally recognized UMRP Port Statistical Area (PSA) leverages industry partnerships to promote economic opportunities and raise national awareness of its strategic importance for shipping commodities. UMRP aims to recognize the production and movement of freight as a vital economic driver for the 15-county geographic area.

<https://experience.arcgis.com/experience/9c9a25b001144a5f9f8523d5bcc12cff>

Illinois Department of Transportation (IDOT) Update



America's Central Port District - Climate Action Plan (Awarded 2024)

In order to address sustainability, climate resiliency, and environmental justice while carrying out its mission, the Port therefore proposes conducting a Climate Action Plan to guide its development moving forward.

The planning process will start with a robust stakeholder engagement strategy, incorporating feedback from commercial, industrial, and residential tenants; harbor operators; regional partner agencies; and the communities of Granite City, Madison, and Venice. Feedback from these groups will be sought on an ongoing basis throughout the project. Through this engagement, the planning study will set climate action goals, including those pertaining to environmental justice. A greenhouse gas inventory will establish a baseline for future performance, as well as aid in the identification of greenhouse gas emissions reduction measures. In addition to identifying these opportunities, the plan will also investigate opportunities for energy efficiency improvements and resiliency improvements, including but not limited to those pertaining to stormwater management and flooding. The plan will conclude with priority implementation recommendations, including potential funding sources.



Rock Island Port District Master Plan and Implementation Strategy (Awarded 2024)

The City of Rock Island has established the Rock Island Port District and seeks grant funding to create a Port District Master Plan and Implementation Strategy. That shall include three elements.

1. Determination of Strategic Direction - Issues to be addressed include Strategic Alignment with the State of Illinois Long Range Transportation Plan, State Accountability of Port District meeting statutory requirements, Assessment/Development of Strategic Alliances and Stakeholder Collaborations, Development of Economic Development Strategies, Assessment of Physical Assets, Development of Strategic Financial Objectives, Development of Marketing and Communication Strategies.
2. Conduct Operational Assessment, Evaluation and Plan - Issues to be addressed include SWOT Analysis and Gap Analysis, Structure/Role of Operational Entities, Funding requirements.
3. Resources and Investment Priorities - Issues to be addressed include determination of Sustainable Funding Resources, integration of Strategic and Operational objectives/actions, Capitalization on Assets while minimizing Risks, Assessment of and Strategy to Respond to Growth Opportunities.

Illinois Department of Transportation (IDOT) Update



Jackson-Union County Regional Port District Feasibility Study (Awarded 2024)

The Jackson-Union Counties Regional Port District is strategically located in Southern Illinois along the Mississippi River (east of the Missouri counties of Cape Girardeau and Scott) offering significant opportunities for intermodal and multimodal transportation.

The purpose of this feasibility study is to assess the opportunities in Jackson and Union Counties resulting in the development of a port district comprehensive plan to guide the development of the port district to support economic development and creation of new job opportunities. The Regional Port District's two counties have poverty levels of 23.3% (Jackson) and 19.5% (Union). Poverty rates are highest among female and minority populations. All of Jackson County is considered to be an area of persistent poverty.

Overall, the purpose of this feasibility study is two-fold; to assess the potential of developments capable of increasing the economic competitiveness within the Jackson-Union Counties Port District region and to create living wage jobs. The feasibility study will also identify potential partnerships with potential to engage in collaborative planning and problem-solving beneficial to the region as a whole.



Illinois Competitive Freight Program

Presented on October 10, 2024

Illinois Department of Transportation (IDOT) Update



2022 Competitive Freight Program

- ❑ 35 applications received requesting \$413 million in federal funds
- ❑ 22 projects funded for \$197.5 million in federal funding
- ❑ Up to 30% of funds can be used for intermodal projects

Highway Goal Areas

- Safety
- Reliability
- System enhancements
- Operational needs
- Truck Parking

Intermodal Goal Areas (Ports and Rail)

- Safety
- Modal connectivity
- Mode Shift

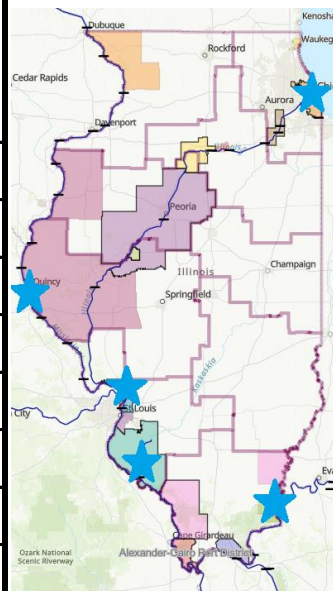
Illinois Department of Transportation (IDOT) Update



2022 Illinois Competitive Freight Program Awards for Ports

Project awards were announced March 30, 2023. Ports were awarded **\$15,427,387**, spread out over 3 years, towards engineering and construction phases for port infrastructure improvement projects.

Sponsor Name	Project Name	Phase	State Fiscal Year	Federal Freight Amount
Americas Central PD	Industrial Roadway Improvement Phase III	Construction	26	\$2,100,000
Americas Central PD	Habor Dock Improvements-Phase II	Construction	26	\$3,636,000
Illinois International PD	Butler Dr/Stony Island Ave Reconstruction	Construction	26	\$4,822,147
Kaskaskia Regional PD	Congestion Reduction & Safety	Phase I Engineering	24	\$60,688
Kaskaskia Regional PD	Congestion Reduction & Safety	Phase II Engineering	25	\$242,752
Kaskaskia Regional PD	Congestion Reduction & Safety	Construction	26	\$4,020,360
Mid America Intermodal Authority PD	Intermodal Project	Phase I Engineering	24	\$145,440
Shawneetown Regional PD	New Port Access Road	Phase I Engineering	24	\$400,000



2022 Illinois Competitive Freight Program Awards for Ports



America's Central Port District (Granite City) - Industrial District Roadway Improvement - Phase 3 - This project was awarded \$2,100,000 for construction to rebuild West 7th and C Streets on port's main industrial park, in Madison, IL. Both streets are part of an 1940s-era perimeter roadway on former US Army Depot property. This is the third and final phase of construction. Approximately 3,200 ft of oil and chip, and old asphalt roadway would be removed to construct a new concrete roadway capable of handling the current and future truck capacity and load demands within the industrial park.

America's Central Port District (Granite City) (ACPD) - Harbor Dock Improvement Project - Phase 2 - This project was awarded \$3,636,000 for construction to rehabilitate and expand the original general cargo dock within the Port. This award is for the final phase of the general cargo dock expansion project. Construction will consist of a new heavily reinforced concrete surface for the northern half of the existing dock and the new extension, reconstruction of the railroad track that will serve this expanded dock and a new lighting system that will provide a 24 hour safe working environment for the entire dock.



2022 Illinois Competitive Freight Program Awards for Ports

Illinois International Port District (Chicago) – Butler Drive & Stony Island Avenue Reconstruction project was awarded \$4,822,147 additional funds totaling \$15,280,000 in federal funds for reconstruction of Butler Drive from Doty Avenue to Stony Island and reconstruction of Stony Island Avenue from Butler Drive south to 130th Street. Butler drive reconstruction will include electrical utility upgrades and Stony Island reconstruction will include an additional inbound lane. The two roadways provide sole access to the Illinois International Port District’s facilities on the south side of Lake Calumet.

Kaskaskia Regional Port District (KRPD) – Terminal #2 Congestion Reduction and Safety Improvements project was awarded \$4,323,800 for reconstructing 3,000 ft of rail, add 170 ft of additional rail, complete 7 tourn outs, and a sheet pile retaining wall. Recommendations from a completed Port Master Plan stated a need for reducing congestion at the port’s terminals. Due to current demand at Terminal #2 and anticipated future movement of cargo through the port, the port will require additional rail storage areas and improvements to prepare the port for an additional dock.



2022 Illinois Competitive Freight Program Awards for Ports

Mid America Intermodal Authority Port District (Quincy) – Intermodal

Project was awarded \$145,440 for phase I Engineering to add 6,000 ft of rail and add a truck transload area. Demand for rail cargo shipments has increased the need for additional rail infrastructure. The rail extension and truck transload area will aid in port operations and support increased demand for movement of agricultural and industrial cargo.

Shawneetown Regional Port District (SRPD) – New Port Access Road

Project was awarded \$400,000 for Phase I Engineering to construct a 1.1 mile port access and truck staging road that connects to IL 13. The additional port entrance will provide a safe access point for trucks to turn on and off IL 13. The access road will have additional staging lanes to alleviate inbound and outbound truck staging congestion on the port, prevent trucks backing up near the current 0.25 mile access and staging road, support truck staging that is currently diverting to the local road network for additional staging space, and prepare the port for further expansion.




IDOT Economic Development Program

Presented on October 10, 2024

Illinois Department of Transportation (IDOT) Update

IDOT Economic Development Program



- 50% Match
 - **Maximum award** = \$2 million
 - Annual program funds = \$15 million
 - Roadway Improvement or New Construction
 - Reimbursement program, Not a grant program
 - Access to new or expanding industrial, manufacturing or distribution type companies
 - Used for the creation or retention of jobs, \$10k for every retained job, \$30k for every new job created
-  Continuous open application period
 - 100% funding for projects on state-owned routes
 - Annual reporting to DCEO required
 - TARP funds can be combined on the project
 - **Non-eligible items:** land acquisition, building demolition, landscaping, sidewalks, street lighting, and utility adjustments
 - For more information contact John.Paris@Illinois.gov



IDOT Modal Plans

Presented on October 10, 2024

Illinois Department of Transportation (IDOT) Update



IDOT Modal Plans



Long Rang Transportation Plan (LRTP)
- Updated every 5 years. Currently underway with an anticipated completion date of 2024.



Active Transportation Plan (ATP) - Currently underway with an anticipated completion date of 2024.



State Freight Plan - Completed every 4 years. Last completed June 2023.



Statewide Public Transportation Plan - Currently underway with an anticipated completion date of 2025.



Rail Plan - Completed every 4 years. Currently underway with an anticipated completion date of 2024.

* There are also a number of other modal plans that are either underway or anticipated starting soon.



Directory, Rates & Charges, and Resources for IMTS

- Port District and Water Terminal Directory
- Illinois Waterborne Transportation Database, (2013-2023): includes barge and terminal rates, truck and rail rates for comparison
- Develop a Illinois Marine Transportation System Report
 - Port and Terminal needs
 - IMTS describe the IMTS directory and the Waterborne Transportation Database
 - Guidance and Resources for IL Port Districts

Illinois Department of Transportation (IDOT) Update

Funding Programs for Port Electrification



- U.S. Environmental Protection Agency (EPA) –
 - Diesel Emissions Reduction Act (DERA)
 - Clean Ports Program
 - Clean Heavy-Duty Vehicle Program
- IL EPA - DERA: Driving a Cleaner Illinois
- US Department of Transportation (DOT)
 - Reduction of Truck Emissions at Port Facilities (RTEPF) Program
- Federal Transit Administration (FTA)
 - Electric or Low Emitting Ferry Pilot Program



Illinois Department of Transportation (IDOT) Update

Resources



- **Illinois Marine Transportation System (IMTS) Website**
<https://idot.illinois.gov/transportation-system/transportation-management/planning/index>
- **Rebuild Illinois - Illinois Port Facilities Capital Investment Grant Program**
<https://idot.illinois.gov/transportation-system/transportation-management/planning/illinois-port-facilities-capital-grant-program>
Awards: <https://idot.illinois.gov/Assets/uploads/files/Transportation-System/Reports/OP&P/Marine/RBI-Port-Project-Awards.pdf>
- **Illinois Competitive Freight Program**
<https://idot.illinois.gov/transportation-system/transportation-management/planning/illinois-competitive-freight-program>
- **Statewide Planning & Research Program**
<https://idot.illinois.gov/transportation-system/transportation-management/planning/index>

THANK YOU!



BJ MURRAY

Section Chief, Marine Transportation Program Planning

Illinois Department of Transportation
Office of Planning and Programming
2300 S. Dirksen Parkway, Room 341-B
Springfield, Illinois 62764

Office Phone: 217-782-4118

Work Cell Phone: 217-720-7054

BJ.Murray@Illinois.gov



BRIAN MCCOY

Specialist, Marine Transportation Program Planning

Illinois Department of
Transportation Office of Planning
and Programming 2300 S. Dirksen
Parkway, Room 341

Office Phone: 217-782-41024

Brian.McCoy@Illinois.gov