



UPPER MISSISSIPPI RIVER
PORTS
CORN BELT PORTS AFFILIATE

Port Statistical Area (PSA)

Interactive Mapping Project, Freight Plan Addendum & Other Planning

UMRP ANNUAL MEETING 2024

Bi-State Regional Commission



Original UMRP PSA Organizational Premise

Patterned after Ports of Cincinnati & Northern Kentucky

Focus on ***existing*** infrastructure

Used by federal government agencies for statistical reporting

Counties formally agree to be recognized as a part of the Mississippi River Ports of Eastern IA and Western IL Statistical Area

Does not preclude/prevent other economic development & transportation arrangements

Facilitated thru cooperative arrangements between ***existing*** government organizations, business & other interests

No Taxing Authority

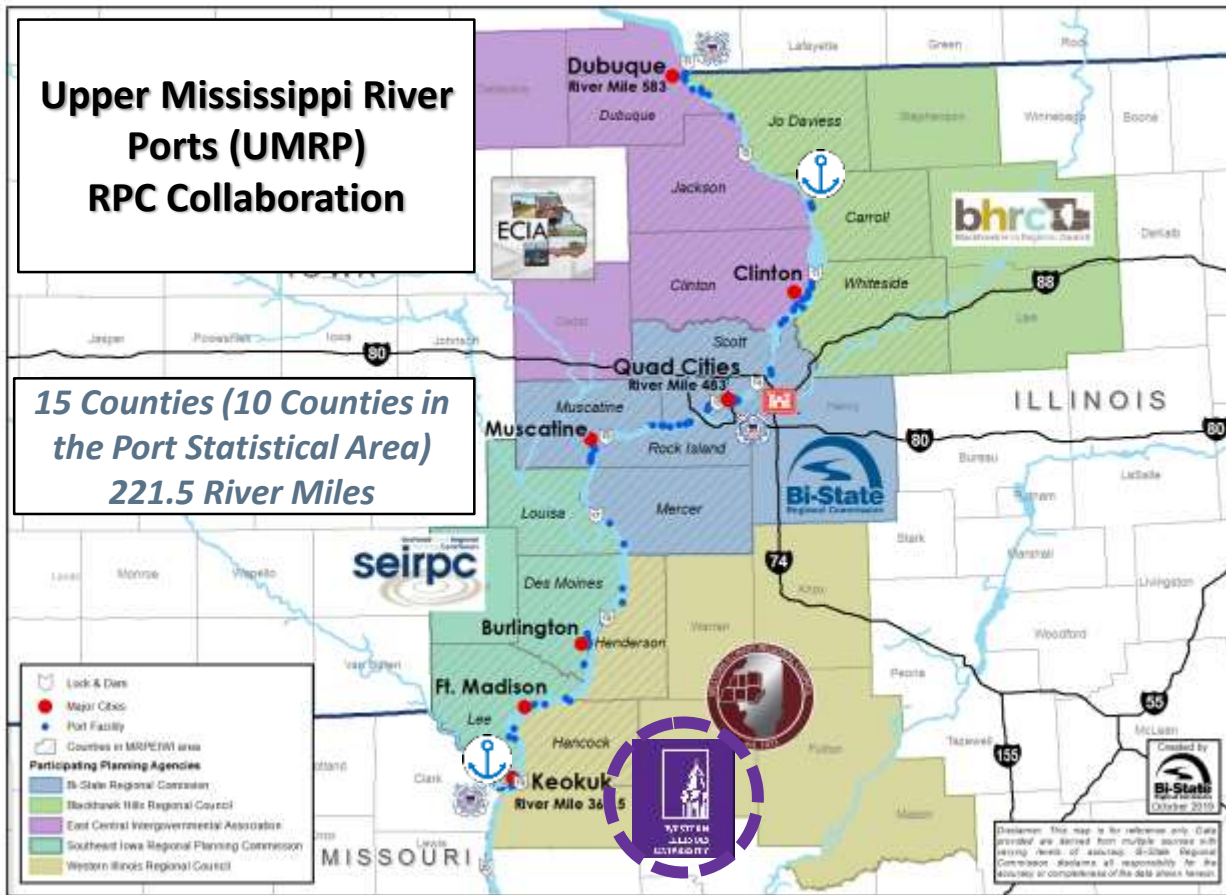
No Bonding Authority

Primarily responsibility is planning, marketing, lobbying, and educating in order to achieve regional objectives including:

- ensuring full utilization and reliable data,
- promote water infrastructure development,
- support other Mississippi River uses,
- enhance access to grants

**Upper Mississippi River
Ports (UMRP)
RPC Collaboration**

*15 Counties (10 Counties in
the Port Statistical Area)
221.5 River Miles*



Major Cities

- Dubuque/East Dubuque Area
- Clinton/Fulton Area
- Quad Cities Area
- Muscatine
- Burlington/Gulfport Area
- Ft. Madison
- Keokuk

Metropolitan Planning

**Organization (MPOs)/Regional
Planning Agencies (RPAs)**

- East Central Intergovernmental (IA)
- Bi-State Regional Commission(IL/IA)
- Southeast Iowa RPC (IA)
- Blackhawk Hills RPC (IL)
- Western Illinois RPC (IL)

**Regional Planning
Agencies (RPAs)
Waterborne
Commerce
Collaboration**

Ports (State Recognized)

- Upper Miss. River International (IL)
- SE Iowa Regional Economic & Port Authority
- Mid-American Intermodal Authority

USACE (Corps) Project Office

Pleasant Valley, IA

USCG (Coast Guard) Offices

Dubuque, Rock Island, Keokuk

Visitors Center

Lock & Dam 15 (Rock Island)

Lead Resource Support Agencies

- WIU Rural Affairs Institute (+)
- Eastern Iowa Community Colleges

As of 20 October 2021

NOTES: Des Moines, Lee, Henderson, and Hancock Counties are part of the MRPEIWI RPA Collaboration and Retain Their Relationship with the Mid-America Port Commission

Status of UMRP Port Statistical Area

2020

- Submitted application (February)
- Designated as federally recognized port statistical area (November)

2021

- Initiated collection and management of statistical data
- Worked together on next steps
- Held regional virtual workshop (March)

2022

- Initiated cooperative interactive mapping project & completed in 2023
- Received NADO Regional Transportation Organizations Excellence Award (July)

Mississippi River Ports of Eastern Iowa and Western Illinois Interactive Mapping Project Goals



The Upper Mississippi River Ports (UMRP) have been functioning as the region's bi-state port area for over 150 years. An application for federal designation was submitted for the Mississippi River Ports of Eastern Iowa and Western Illinois (MRPEIWI) region in February 2020, and in October 2020, the port statistical area (PSA) was recognized and is doing business as UMRP. The National Waterborne Commerce Statistics Center (WCS) began collecting and managing statistical data for UMRP. This area is also designated as a segment of Marine Highway M-35 by the United States Department of Transportation's Maritime Administration (MARAD).

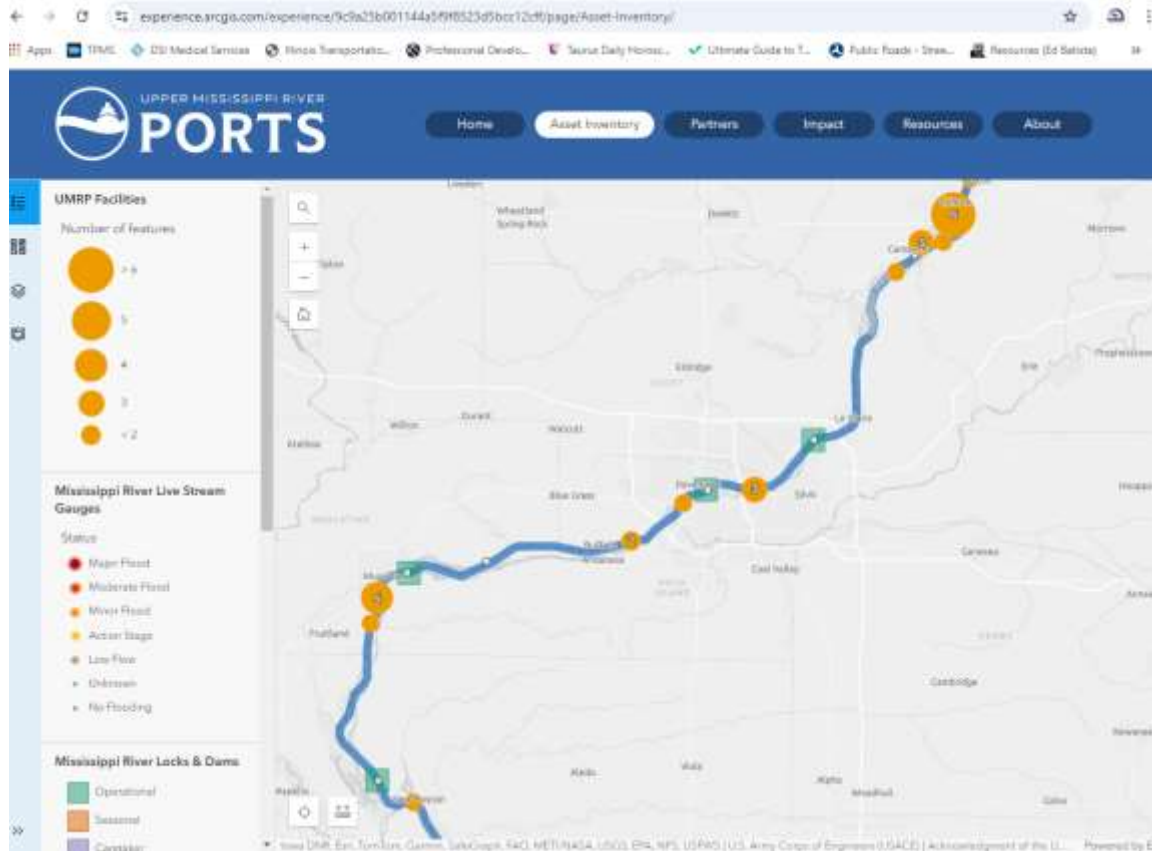
What is UMRP?

UMRP consists of existing Iowa and Illinois ports and terminals along the Mississippi River from river mile 361.5 in Keokuk, Iowa to river mile 583 in Dubuque, Iowa. The federally recognized UMRP PSA will leverage industry partnerships to promote economic opportunities and raise national awareness of its strategic importance for shipping commodities. UMRP aims to recognize the production and movement of freight as a vital


- Expand staff capacity
- Establish public-private partnerships with river terminals
- Promote multi-modal opportunities and future funding opportunities
- Highlight the critical role the river

<https://experience.arcgis.com/experience/9c9a25b001144a5f9f8523d5bcc12cff>

UMRP Asset Inventory



<https://experience.arcgis.com/experience/9c9a25b001144a5f9f8523d5bcc12cff>



Riverstone Group, Moline Quarry
×

Zoom to

Location

City	Moline
County	Rock Island
State	IL
Zipcode	61265
Mile	486.30
Bank	Left
Latitude (y)	41.51
Longitude (x)	-90.50
Location Description	Mile 486.3 AOR, left bank, Mississippi River, Moline, approximately 0.4 mile above Iowa-Illinois Memorial (Interstate Highway 74) Bridge.
Port Name	E Iowa and W Illinois, IA IL

Facility Details

Berthing Largest	1000
------------------	------

Other Freight Planning

2023

- Planning Funds for Regional Freight Plan Addendum
- Rock Island Regional Port District Designation

2024

- Regional Freight Plan Addendum
- Planning Funds for Rock Island Sunset Business Park –Regional Port District Master Plan

2024 Bi-State Region Freight Plan Addendum Freight Network Inventory — Maritime

4

Locks and Dams

55

Docks

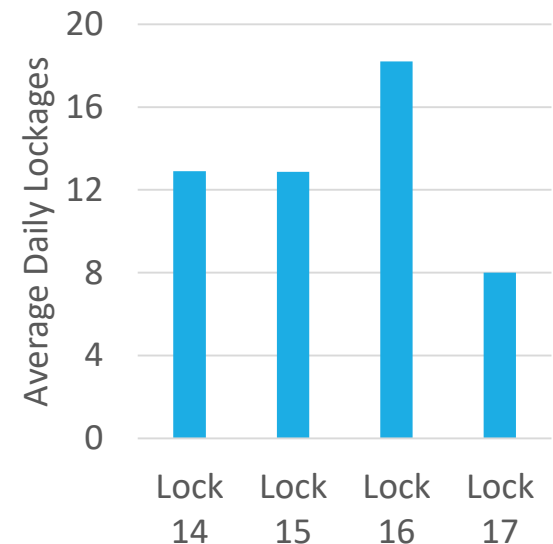
\$363 million

Maritime-Related Cargo Value, 2022

State Regional Waterway System and Commodities Handled



Average Daily Lockages by Lock, 2020



<https://bistateonline.org/transportation-and-mobility/regional-freight-system>

Bi-State Freight Plan - Mobility Goal

Boost freight system mobility by eliminating barriers and bottlenecks

Locks and Dams in the Bi-State Region



Survey responses:

Top three maritime issues affecting businesses:

- Terminal access to ports and rail/road connectors
- System condition/maintenance
- Congestion and bottlenecks at locks and ports

<https://bistateonline.org/transportation-and-mobility/regional-freight-system>

Bi-State Freight Plan- Sustainability and Resiliency Goal

Create a more sustainable and resilient freight system

Performance Measures

Unscheduled closures at Rock Island District locks

Locks and Dams in the Bi-State Region



Total Unscheduled closures at Rock Island District locks, 2016 - 2020

Lock	Unscheduled Closures	Unscheduled Closure Hours	% of Total Closures That Were Unscheduled
Lock 14	146	380	86.4%
Lock 15	147	1,156	89.6%
Lock 16	109	2,500	77.3%
Lock 17	116	2,644	89.9%

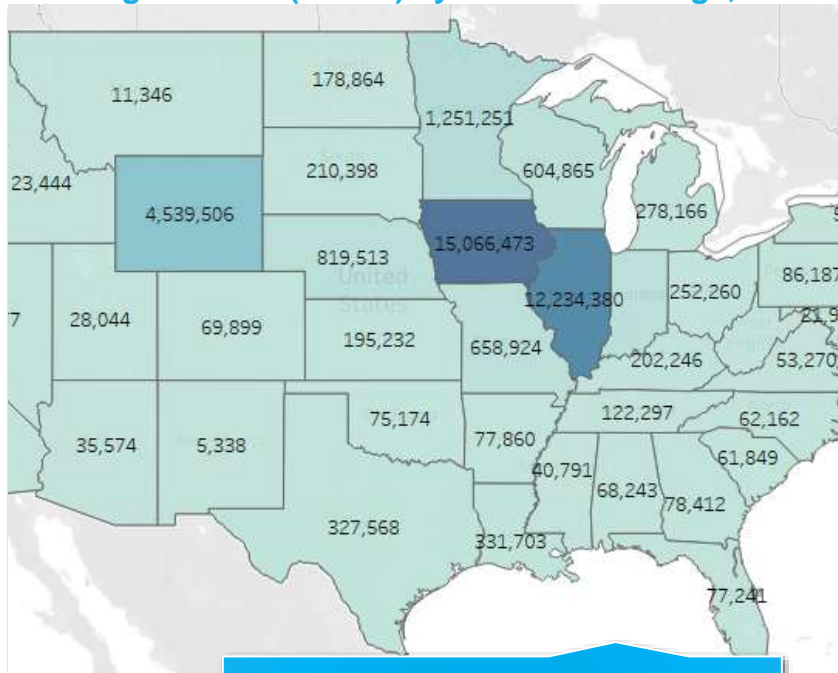
Source: CPCS analysis of USACE's Lock Queue Report, 2023

Flooding and low water levels reported by survey takers as concerns for both maritime mobility and rail connections at ports

Bi-State Region Freight Plan

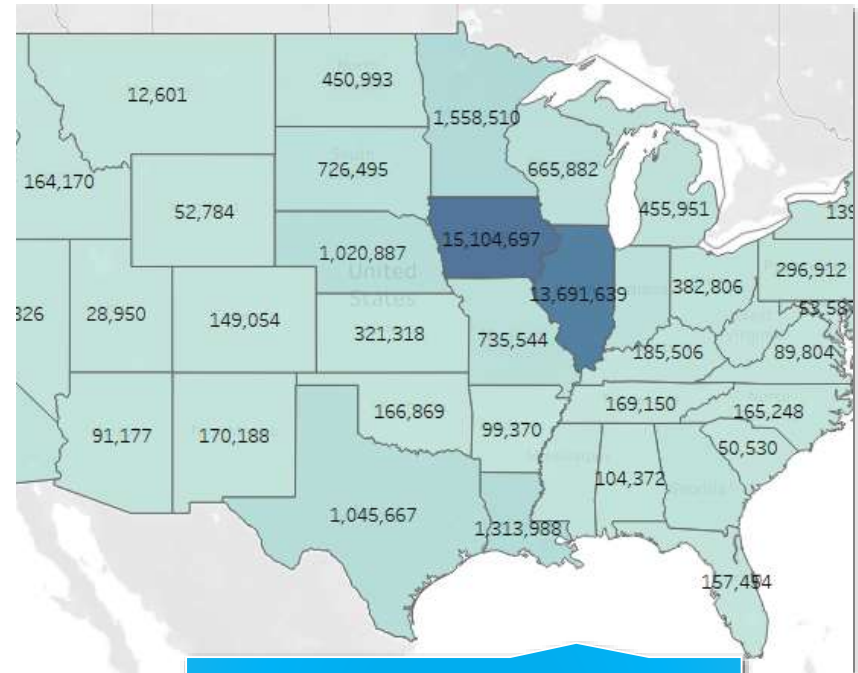
Commodity Flow — Top Trading Partners

Trading Partners (States) by Inbound Tonnage, 2022



- 69% from Iowa and Illinois
 - Wyoming, Minnesota, Indiana and Nebraska also major partners

Trading Partners (States) by Outbound Tonnage, 2022



- 69% from Iowa and Illinois
 - Minnesota, Louisiana, Missouri, and Texas also major partners

Why Inland Ports Matter



- Creates jobs
- Address rising intermodal volumes— **2% of commodities by mode in BS Region**
- Move bulk goods efficiently
- Greenest form of transport
- Proximity to producers & markets as regional hubs

Changing Nature of Commodities

Historically, lots high-volume low-value goods...

- Agricultural Fertilizers
- Road Salt
- Cereal Grains
- Gravel

But that is changing...

- Energy products
- Not just bulk – more interest in super sacks, break bulk
- Rail connectivity / access is increasing in demand.

Questions?

**Gena McCullough, Deputy
Director**

**Bi-State Regional
Commission**

1504 Third Avenue

Rock Island, IL 61201

(309) 793-6300 Ext. 1146

gmccullough@bistateonline.org



UPPER MISSISSIPPI RIVER
PORTS
CORN BELT PORTS AFFILIATE