

# Missouri Waterway and Freight Update

2025 Corn Belt Ports & Mid-America  
Ports Commission Annual Meeting

March 18, 2025

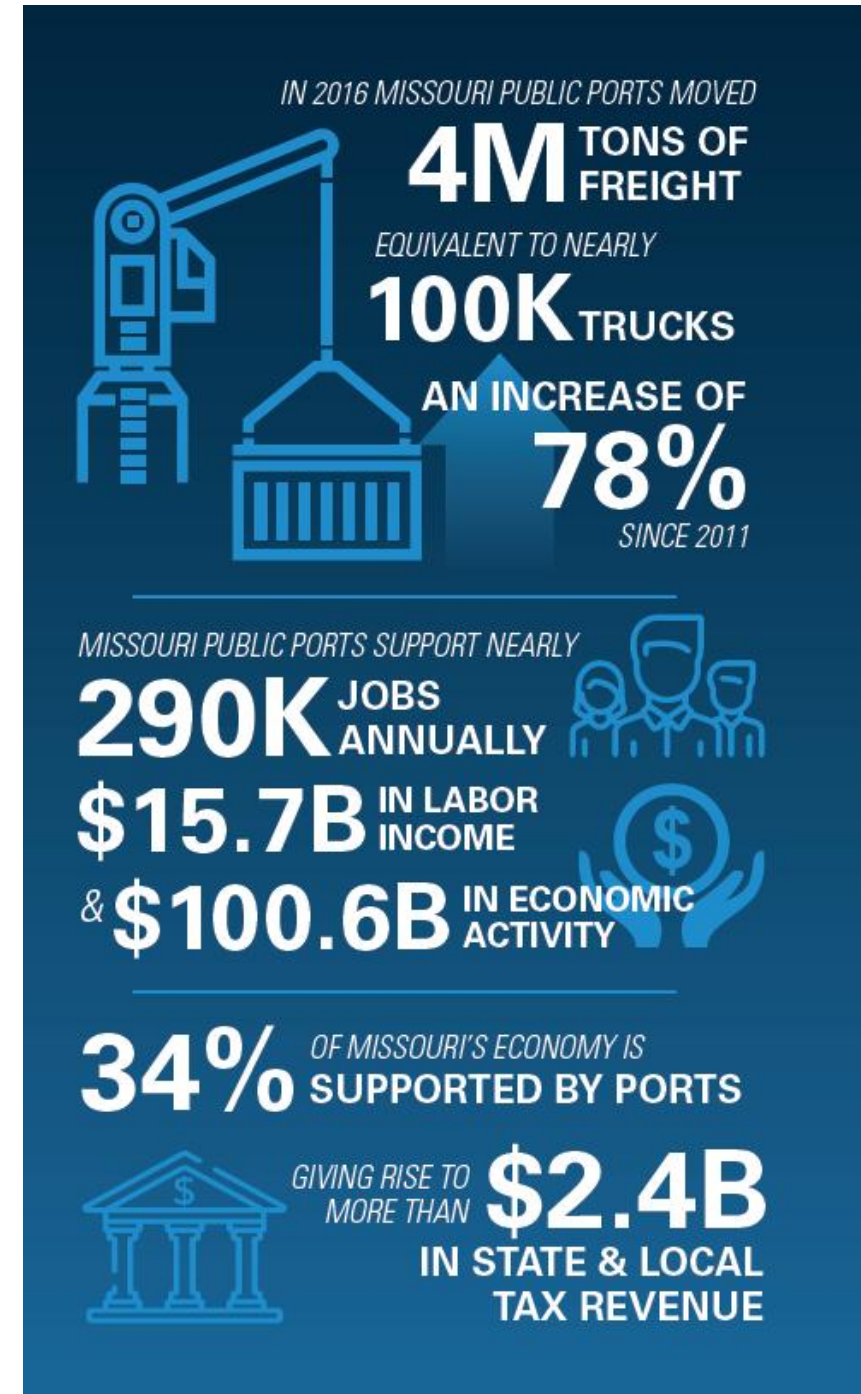


Director: Ed Hassinger













# Missouri Investment

- **Fiscal Year 2025**

- \$11.6 Million Capital Improvement Projects
- \$800,000 Administration Funding
- Waterway and Port Trust Fund
- \$938,000 for non-federal match for the Lower Missouri River Navigation Study



# Commercial Navigation Impact Team

- Navigators
- USACE
- Coast Guard
- IRPT
- Coalition to Protect the Missouri River
- MPAA
- Weather Service
- Iowa DOT
- Illinois DOT
- MoDNR
- MoAg
- St. Louis Freightway





# MoDOT Freight Enhancement Program

A freight train is shown traveling along a riverbank at dusk. The train consists of several white boxcars, a green container, and a blue container. The river is on the left, and the Missouri State Capitol building is visible in the background on the right. The sky is a mix of orange and blue, indicating sunset or sunrise.

- **Awarded to Public or Private Entity**
- **Goal to Enhance Freight Movements in Missouri**



Thank You

