



SIREPA

SOUTHEAST IOWA REGIONAL
ECONOMIC & PORT AUTHORITY

2023 ANNUAL REPORT TO FOUNDING GOVERNMENTS
City of Keokuk, City of Fort Madison, Lee County

FEBRUARY, 2024

BACKGROUND



- SIREPA was founded in 2006 by the Cities of Fort Madison and Keokuk and Lee County
- SIREPA is a municipality of the state authorized by Iowa Code Chapter 28J
- SIREPA is administered under contract by Southeast Iowa Regional Planning Commission (SEIRPC) responsive to board of directors

BACKGROUND



SIREPA
SOUTHEAST IOWA REGIONAL
ECONOMIC & PORT AUTHORITY

- SIREPA board of directors appointed by founding governments, with 2 members each.
- SIREPA funding is sourced from founding governments, contracts, contributions or other means.
- “SIREPA exists to create new economic development opportunities in Lee County and Southeast Iowa. SIREPA seeks to encourage growth by removing obstacles to private investment and lower fixed costs for private companies by using bonding, financing, and ownership abilities.”

2024 RESULTS



SIREPA
SOUTHEAST IOWA REGIONAL
ECONOMIC & PORT AUTHORITY

- Successful ownership of Lee County Career Center (LCC) in partnership with Lee County Economic Development Group.



2024 RESULTS



SIREPA
SOUTHEAST IOWA REGIONAL
ECONOMIC & PORT AUTHORITY

- Every 8th and 9th grader at Central Lee, Fort Madison, and Keokuk school districts visited three times in a systematic experience at the center to interact with area industries and their career possibilities



2024 RESULTS



SIREPA
SOUTHEAST IOWA REGIONAL
ECONOMIC & PORT AUTHORITY

- The LCC is incubating a startup solar panel pallet manufacturer that has secured Dept of Energy grants, venture capital, and large orders from solar panel companies.



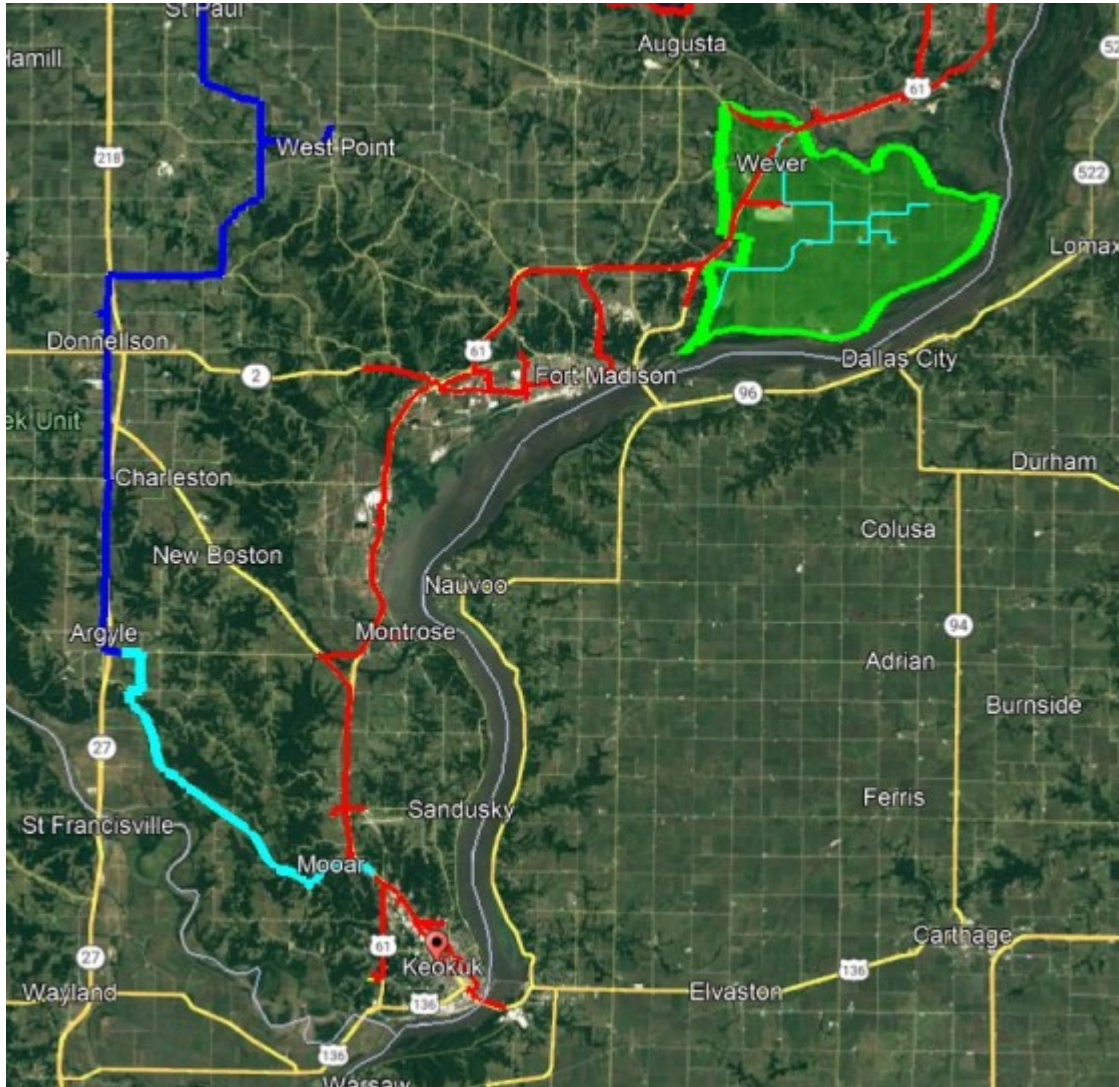
2024 RESULTS



SIREPA
SOUTHEAST IOWA REGIONAL
ECONOMIC & PORT AUTHORITY

- Lee County Broadband Expansion Program - \$1.9 million investment into Lee County for new rural services and a 14-mile fiber backbone providing redundant fiber loop for Lee County and expanded data capacity.
- Partners: Lee County, Danville Telco
- SIREPA role: Invest Lee County ARPA dollars into a public-private partnership with Danville Telco

2024 RESULTS



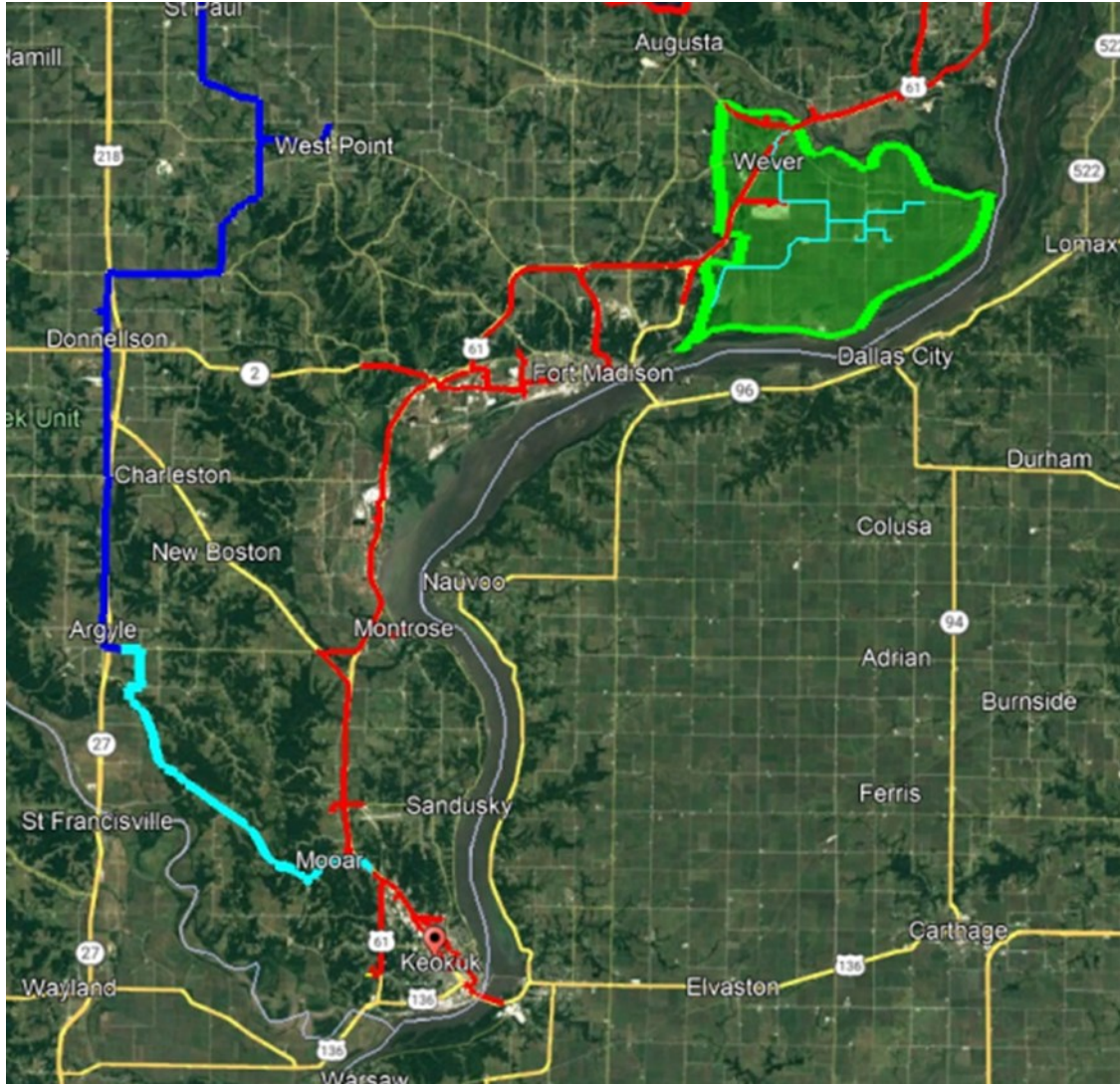
SIREPA

SOUTHEAST IOWA REGIONAL
ECONOMIC & PORT AUTHORITY

All of light blue is Lee County Broadband Expansion Project

The new fiber backbone can handle many, many, more new services and uses, giving Lee County more future broadband and data options than ever before.

2024 RESULTS

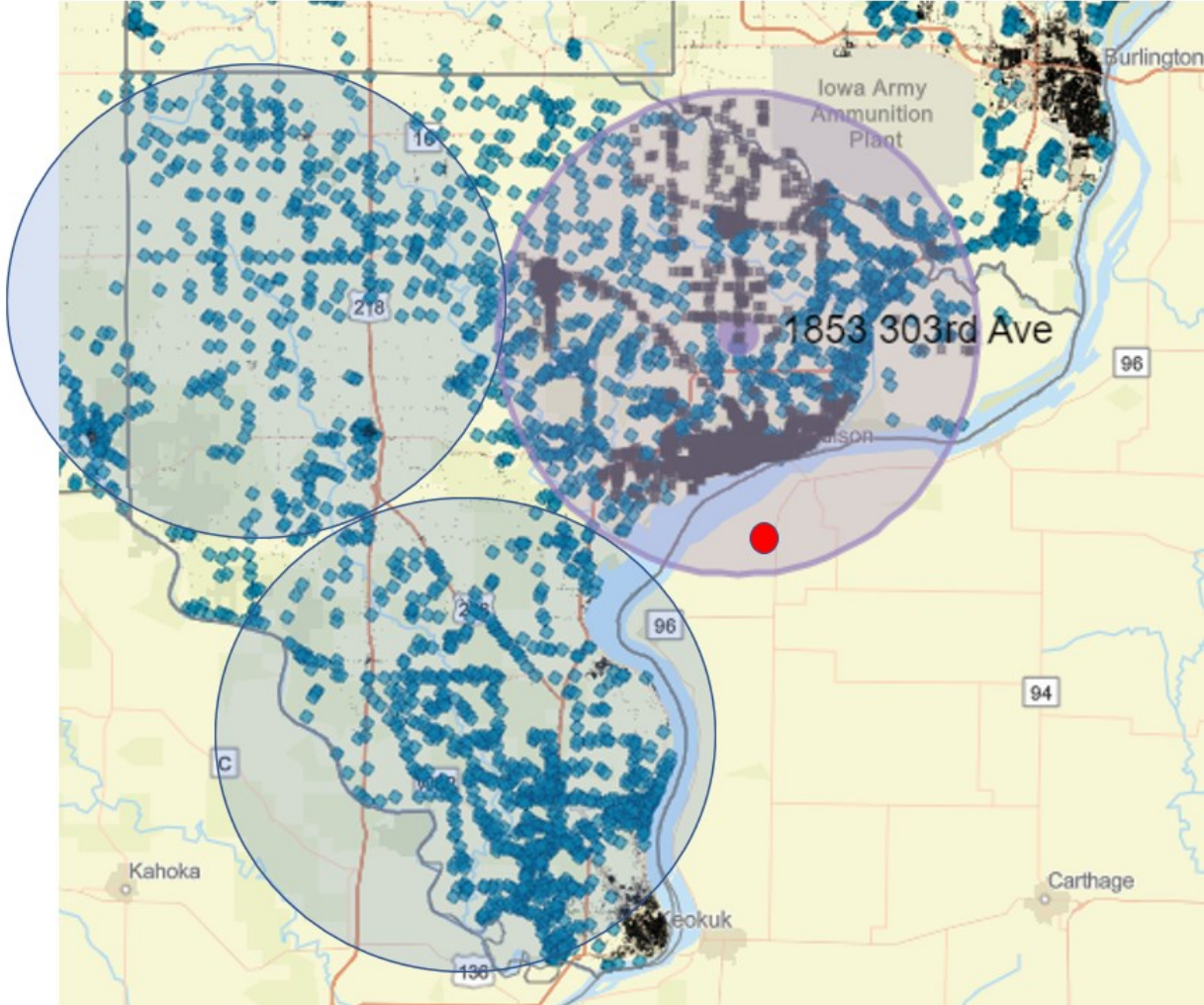


SIREPA
SOUTHEAST IOWA REGIONAL
ECONOMIC & PORT AUTHORITY

SIREPA will own the 14 miles of fiber backbone and lease it back to Danville Telco for operation.

Lease revenues can be put back into more broadband investments and support SIREPA initiatives.

2024 RESULTS



SIREPA
SOUTHEAST IOWA REGIONAL
ECONOMIC & PORT AUTHORITY

Broadband Intervention Zones established by SIREPA and facilitated by SEIRPC have led to \$20 million in anticipated private investment to serve around 2,000 underserved Lee County residents.

2025 PLAN OF WORK



- Monitor construction of Lee County Broadband Expansion Project
- Plan the future of Lee Co Career Center and 12-acre property with LCEDG
- Involvement in natural gas expansion and investment process
- Plan for future broadband investments with private partners
- Grow SIREPA into the most effective port authority in the Midwest
- Sponsor PIDP grant of \$10 million+ for waterside improvements to transload facility



SIREPA

SOUTHEAST IOWA REGIONAL
ECONOMIC & PORT AUTHORITY

SIREPA BOARD MEMBERS

**Bruce
Hardy**

*Secretary/Treasurer,
Fort Madison Rep.*



**Mike
Hickey**

*Chair,
Keokuk Rep.*



**Bob
Dodds**

*Vice Chair,
Lee County Rep.*



**Jack
Smith**

Lee County Rep.

**Mike
Dunn**

Keokuk Rep.

**Tony
Johnson**

Fort Madison Rep.

EX OFFICIO:

Gary Seyb
Lee Co. BoS

Matt Larson
*State of Iowa
Treasurer's Office*

Tom Schultz
Lee Co. BoS

Thank you for your support!

Key SIREPA Staff:

Mike Norris, SEIRPC

Zach James, SEIRPC

Lori Gilpin, SEIRPC

*SIREPA is managed under contract by
Southeast Iowa Regional Planning Commission
(SEIRPC), since 2015*